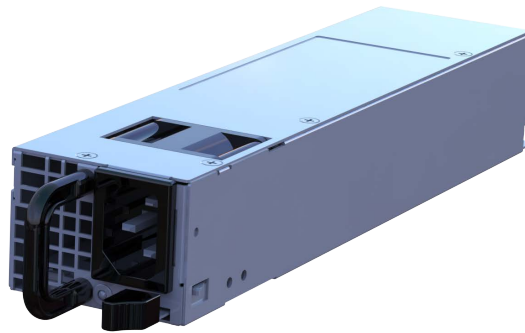


CORIOmaster2 Redundant Power Supply

CM2-4RPS

CORIOmaster2™ accessory



OVERVIEW

The CM2-4RPS is a hot swappable redundant power supply for CORIOmaster2 and is designed for mission critical applications. It operates in conjunction with the identical chassis PSU on a load balanced basis and provides seamless and uninterrupted fail-over should the chassis PSU fail or vice versa.

SPECIFICATIONS

Warranty	Limited warranty: 5 years parts and labor	Environmental	Operating temp 0 °C to 40 °C (32 °F to 104 °F)
Regulatory compliance	FCC, CE, RoHS, UL		Operating humidity 10% to 85% non-condensing
Input Voltage	110 to 240V AC Auto Detecting		Storage temp -10° to +70° C (+14° to 158° F)
Output Voltage	12V DC		Storage humidity 10% to 85% non-condensing
Power	400W		MTBF 200,000 hours
Mechanical		Product item number	CM2-4RPS Redundant Power Supply
Size (H x W x D)	40 x 54.5 x 220 mm (247 mm with handle) (1.57" x 2.15" x 8.66" or 9.72" with handle)	Associated products	CM2-547 CORIOmaster2 4RU chassis

Specifications subject to change without notification