

iSpeaker MD30 Quick Guide

Thank you for choosing this device. The following guidelines will give you a quick overview of how to use this product.

Cautions

To ensure reliable use of the equipment and the safety of personnel, please observe this guide during installation, use and maintenance.

1. When install the equipment, make sure the power cord and the chassis are well grounded.
2. Keep the working environment well ventilated, so that the heat generated by the equipment can be discharged in time to avoid high temperature and damage to the equipment.
3. In a humid and dewy environment or when not in use for a long time, the main power supply should be turned off.
4. Be sure to unplug the AC power cord from the power supply outlet before the following operations.
 - Remove or reassemble any part of the equipment.
 - Disconnect or reconnect any electrical plugs or connections to the equipment.
5. Do not disassemble the equipment without permission from non-professionals to avoid the risk of electric shock. Do not repair the equipment privately to avoid aggravating the degree of damage.
6. Do not spill any corrosive chemicals or liquids on or near the equipment.

Equipment information

The iSpeaker MD30 is a DANTE (AES67) interface microphone that enables the conversion of analog audio signals to digital audio signals for long-distance transmission via the DANTE interface. The microphone is powered via POE (IEEE 802.03af).

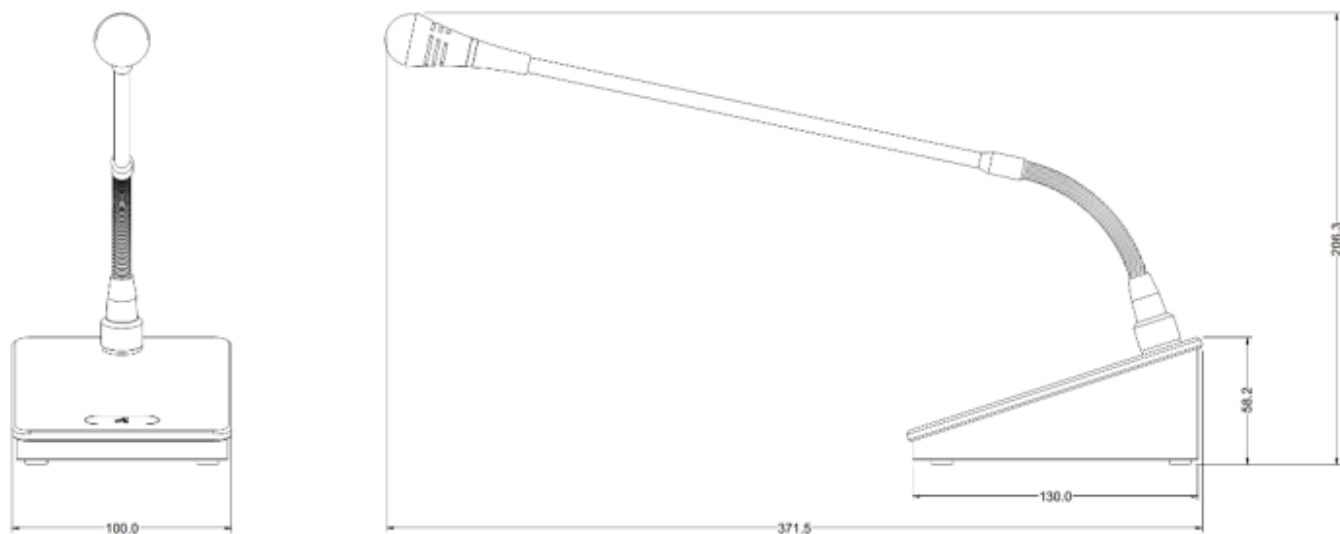


- ① Dante interface with POE function
POE power and DANTE audio output
- ② Pushbutton Switches
Turning the microphone on or off
- ③ Gooseneck Microphone
For sound pickup
- ④ Volume adjustment knob (at bottom)
Adjustable range: 0dB-23dB

2. Equipment parameters

Components	Electret condenser microphone core
Sensitivity	-40dBV /Pa
Directionality	Heart-shaped single pointing
Frequency Response	20Hz-20KHz
Output Impedance	280 Ohm
Maximum sound pressure	140dB, THD<1%
Signal-to-noise ratio	>92dB
Power supply method	11-52v phantom power, 2mA POE powered IEEE802.3af/at/bt
Input Connector	4-pin airline plug male connector
Output Connector	4-pin male XLR connector
Size	Microphone pole: 388.7mm Base: 134.6x100x58.2mm

3. Equipment size



4. Equipment operation

- ① Connect the device correctly
- ② Control DANTE audio routing with Dante Controller
- ③ Turn the microphone on or off with the microphone switch

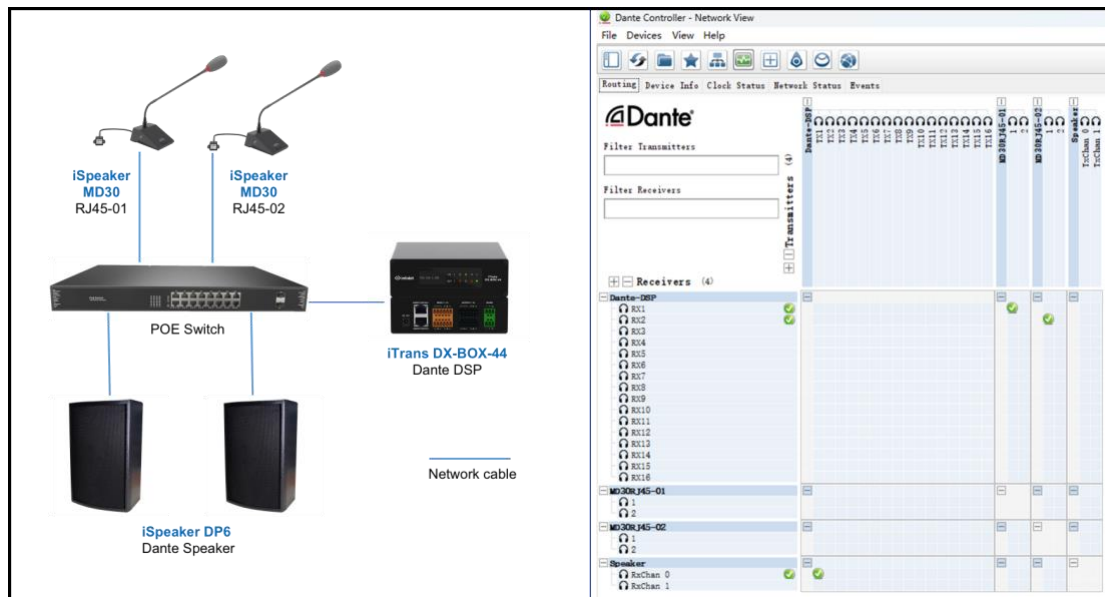
Packaging Details

iSpeaker MD30	Quick Guide
1 pcs	1 pcs

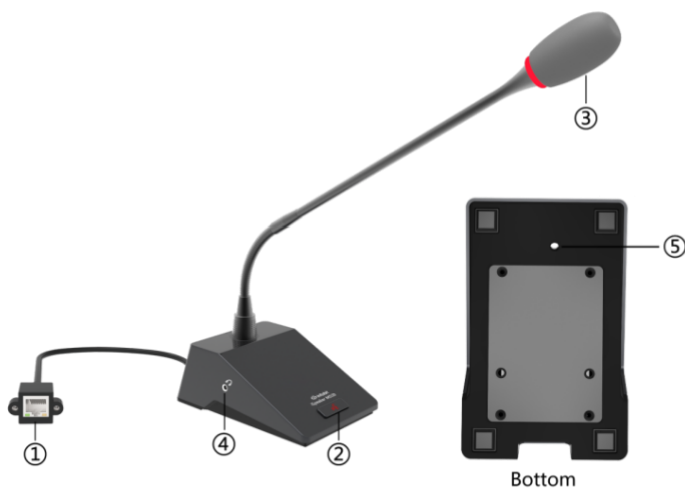
Warranty Card

Date of shipment.
Product Model.
Fuselage no.
Distribution

Connection



Interfaces



- ① RJ45 Dante interface with POE function, for POE power and DANTE audio output
- ② Push button: turn the microphone mute/ unmute
- ③ Gooseneck Microphone: for sound pickup
- ④ 3.5mm earphone: to monitor the sound of the iSpeaker MD30
- ⑤ Volume adjustment knob (at bottom): Adjustable range 0dB-23dB

**The 3.5mm sound monitoring is available from April 01, 2023. All previous versions don't support.*

CONTACT US

INFOBIT AV

www.infobitav.com

info@infobitav.com