

# Port EI

in desk power module

## USER

# MANUAL

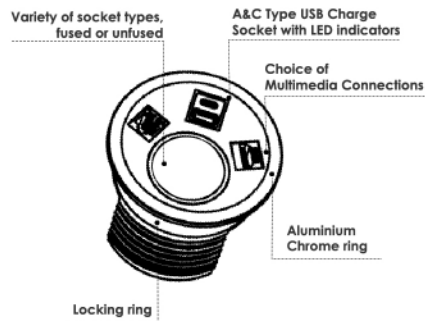


SCAN ME



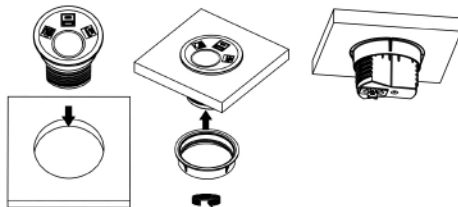
www.abl-ltd.com

Thank you for purchasing ABL's Port EI power module. Port EI has been manufactured and tested in accordance with relevant standards (see contact page).



### INSTALLATION:

Ensure that there is a sufficient clearance, 150mm bellow surface and 30mm between the cut-out edge and the edge of the work surface.



**Step 1.** Place the module in the desk cut-out.

**Step 2.** Whilst twisting the locking ring, set the module orientation.

**Step 3.** Connect the mains lead with the 3 Pole Connector.

### MAIN FEATURES:

- The module is available in Black, White or Grey; with an elegant, Silver aluminium ring.
- Available configurations: one socket, one smart charge and up to two media connections.
- Rated voltage of Port EI power module unit is 250V AC (**C, E, F, G, J, L**), for **B type sockets** 120V AC
- Nominal intensity of the unit:
  - 13A for **G type socket**
  - 16A for **B, C, E, F, J, L type sockets**
- G type sockets are individually fused with 3.15A or 5A fuse to comply with BS6396
- Fit into a 80mm port hole, and desk thickness between 15 and 45mm
- Locking ring enables quick installation and fitting with no effort

Note: The most common socket types:



Contact us for more information.

### SAFETY NOTES:

- Items such as Vacuum Cleaners, Kettles, Coffee Makers, and Fan Heaters should not be connected via these power modules
- Installation is to be carried out by a qualified professional



Complies with BS 5733 (UK)  
IEC 60884-1 and IEC 60884-2-7 (Europe)



Kitemark certified on 13A Plugs and Socket outlets  
(KM686563)



Manufacturing in-house within central  
Europe under strict compliance with  
ISO 9001:2015

## CONTACT US

### UK DISTRIBUTION CENTRE

14 Fleming Close  
Park Farm Ind. Estate  
Wellingborough  
Northants NN8 6UF  
United Kingdom

+44 (0) 1933 400 080  
sales@abl-ltd.com

### EMEA DISTRIBUTION CENTRE

Lava Tolstaja 25  
32103 Cacak  
Serbia

+381 (0) 32 420 100  
sales@abl.co.rs

## CONTENTS:

- Port EI  
power module



x 1

Note: Use mains lead cable to connect Port EI  
power module with the main power supply

## MAINTENANCE:

Do not open, disassemble, change, or modify the  
device. Every unauthorized opening or repairing of  
the device leads to loss of warranty. During device  
usage, you need to follow basic safety measures.  
since safety requirements vary, please check with  
local laws.

## WARRANTY CONDITIONS:

ABL warrants this product as free of defects in  
material, design, and workmanship for the period of  
twenty-four (24) months from the original date of  
receipt of the product, unless applicable national  
laws stipulate otherwise. If during the period of  
warranty this product proves defective under  
normal use and service you should return the  
product to the retailer from whom it was originally  
purchased. The liability of the ABL is limited to the  
cost of repair and/or replacement of the unit under  
warranty. The warranty is void if a failure occurs due  
to the following reasons:

- Improper device installation
- Improper handling
- Improper transport
- Force majeure



**WARNING: Do not use this product for any  
other purpose other than which it was  
designed for.**

